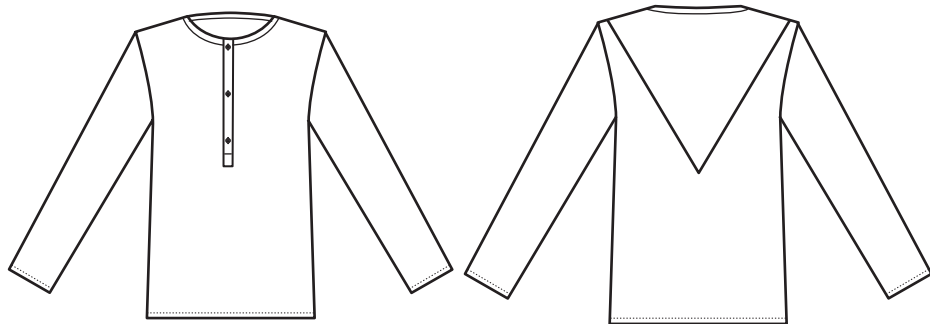


JENS FANSLAU

FW 2011/12

Longsleeve
Nr. LS01-11

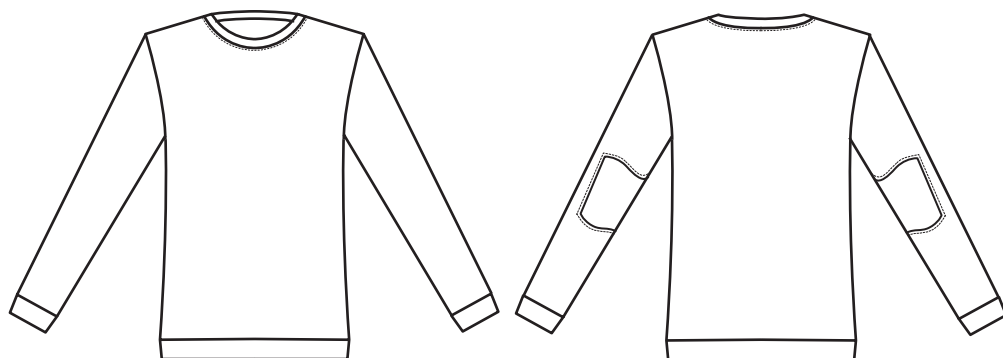


sizes: XS, S, M, L, XL

available colors:
black, white

100% ribbed wool

Sweater Elbow
Nr. SW01-11



sizes: XS, S, M, L, XL

color: charcoal

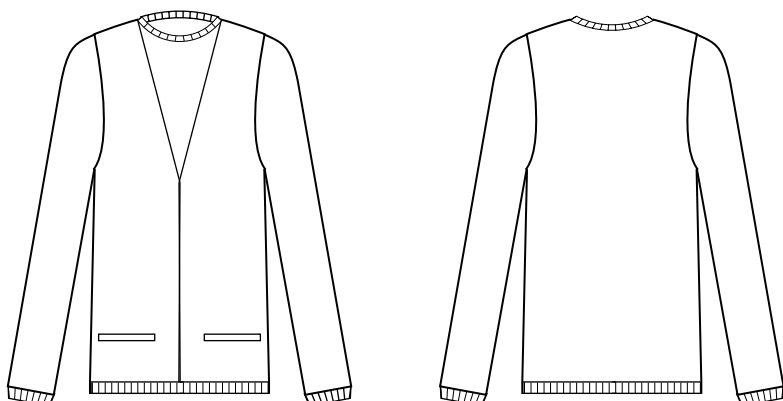
100% wool

OR

color: beige

55% wool
20% acrylic
25% silk
leather details

Sweater Knit
Nr. SW02-11

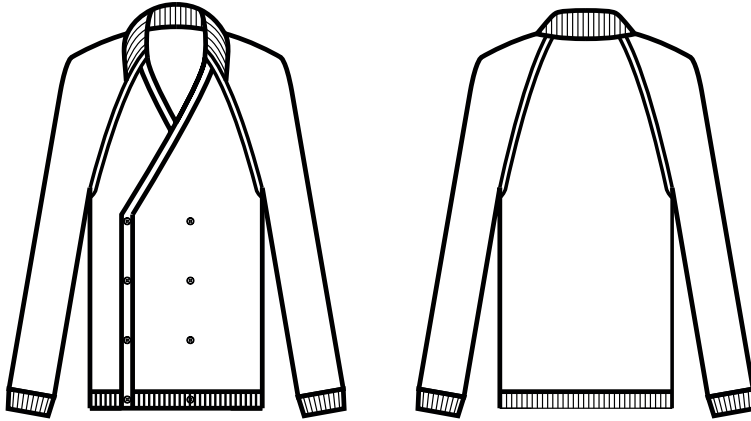


sizes: S, M, L

available colors:
grey, beige

100% wool

Cardigan Double
Nr. C01-11



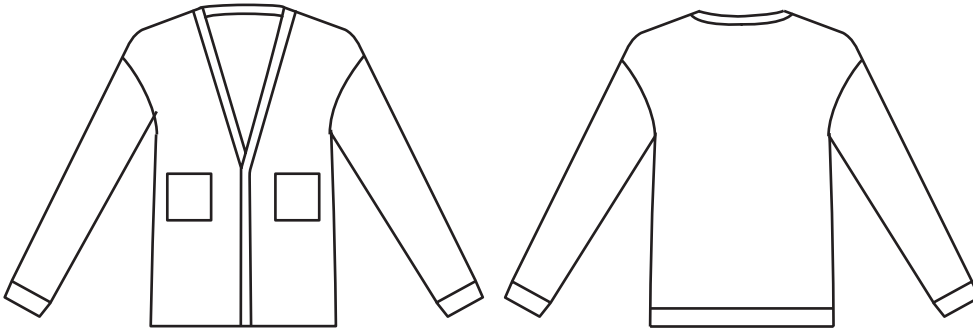
sizes: S, M, L

color: charcoal

100% wool
horn buttons

double breasted
double knit

Cardigan Single
Nr. C02-11

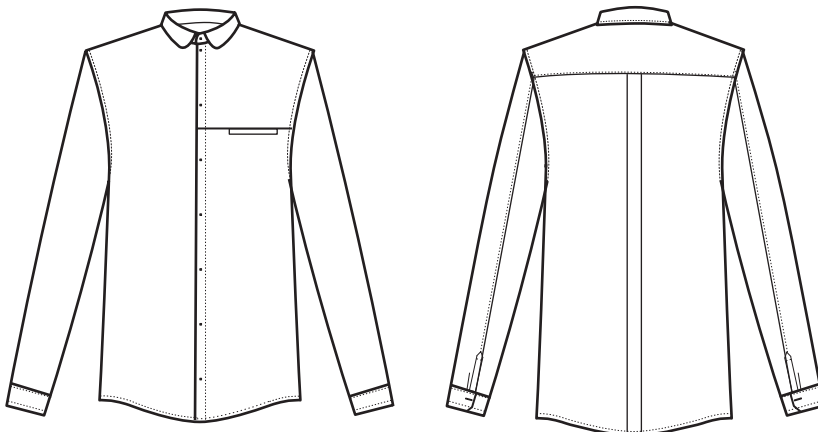


sizes: S, M, L

color: blue

100% cotton
horn buttons

Shirt Pocket
Nr. S01-11



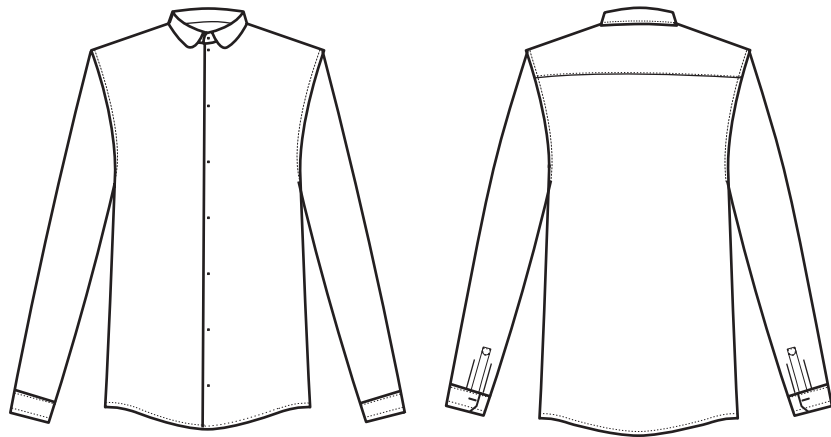
sizes: S, M, L, XL

color: orange melange

100% cotton

button-down collar
normal fit

Shirt Round Collar
Nr. S02-11



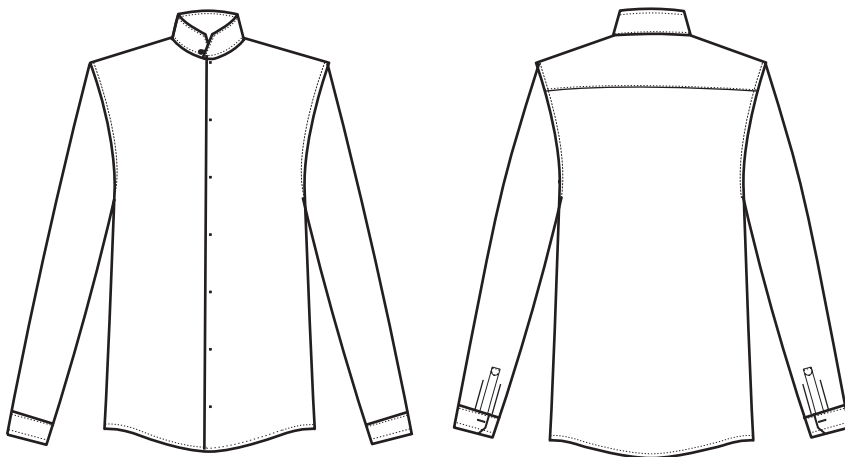
sizes: S, M, L, XL

available colors:
black, white

50% cotton
50% silk

slim fit

Shirt Stand-Up Collar
Nr. S03-11



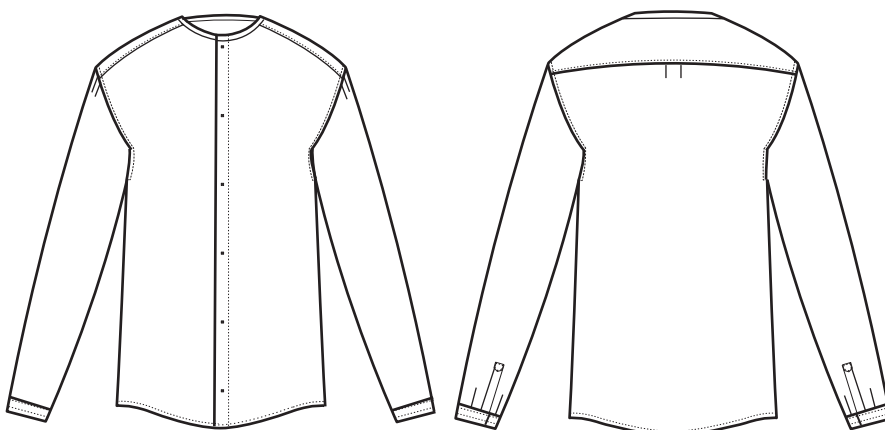
sizes: S, M, L, XL

color: brown

60% wool
40% linen
wood buttons

normal fit

Shirt Pirate
Nr. S04-11



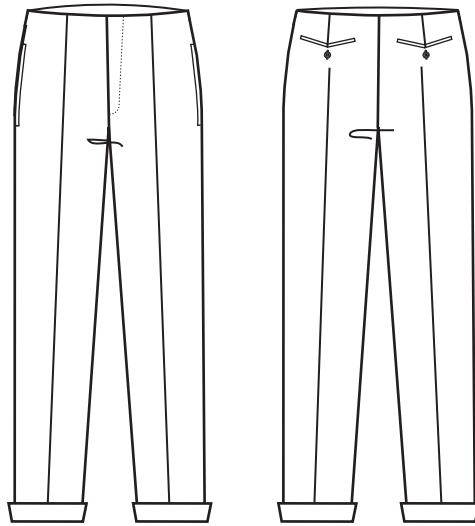
sizes: S, M, L, XL

color: white

100% linen

normal fit

Trousers Ankle
Nr. T01-11



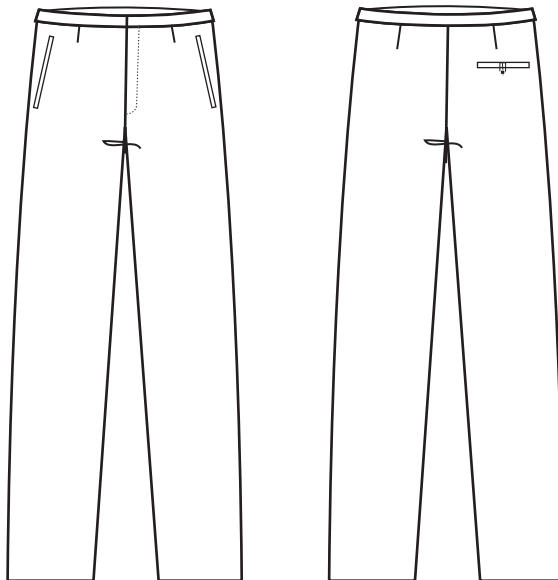
sizes: S, M, L

color: black

100% wool
horn buttons

slim fit
pleated
fold-up

Trouser Straight
Nr. T02-11



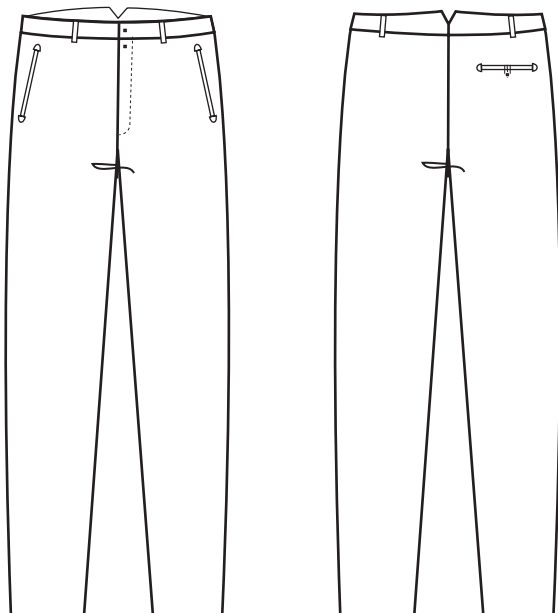
sizes: S, M, L, XL

color: blue

100% wool
horn buttons
leather strap

straight fit

Trouser Old
Nr. T03-11



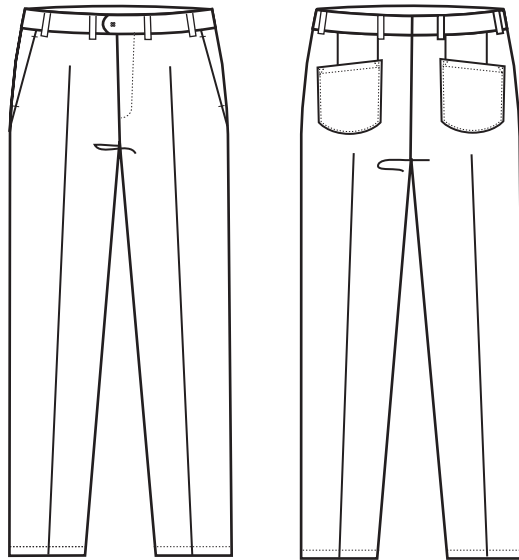
sizes: S, M, L, XL

color: red-brown

100% cotton
horn buttons

button fly
pleated
straight fit

Trouser Slim
Nr. T04-11



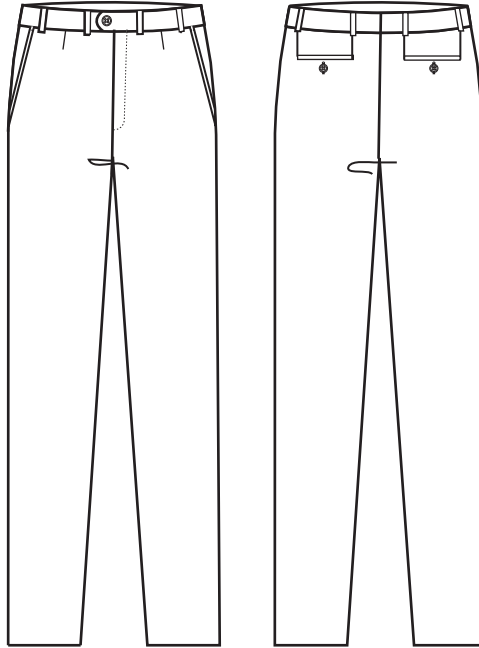
sizes: S, M, L, XL

available colors:
black, brown melange

50% wool
50% acrylic
horn buttons

slim fit

Trouser Carrot
Nr. T05-11



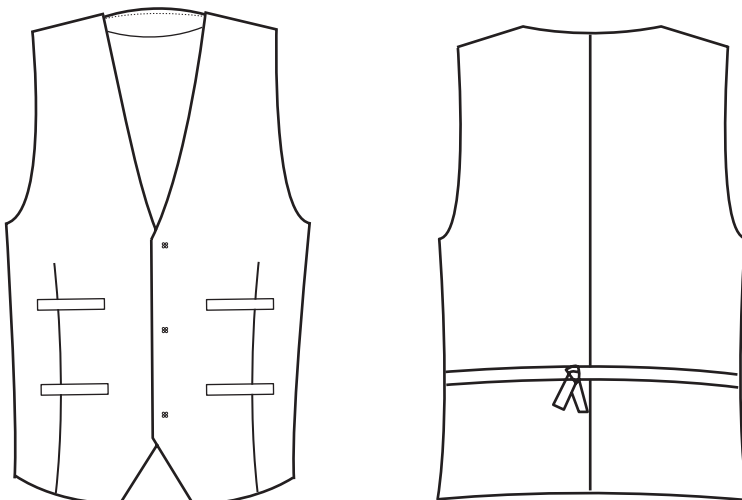
sizes: S, M, L, XL

color: grey

100% wool

carrot shaped
pleated

Waistcoat Classic
Nr. WCO1-11

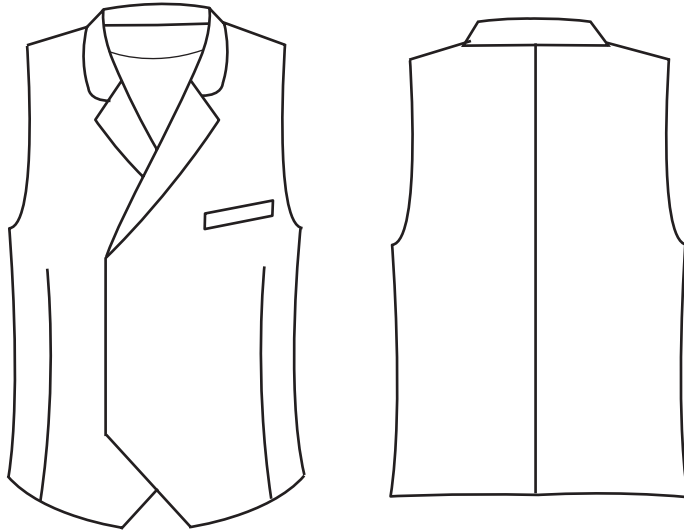


sizes: S, M, L

color: black

100% wool
lining 100% cotton
horn buttons

Waistcoat Double
Nr. WC02-11



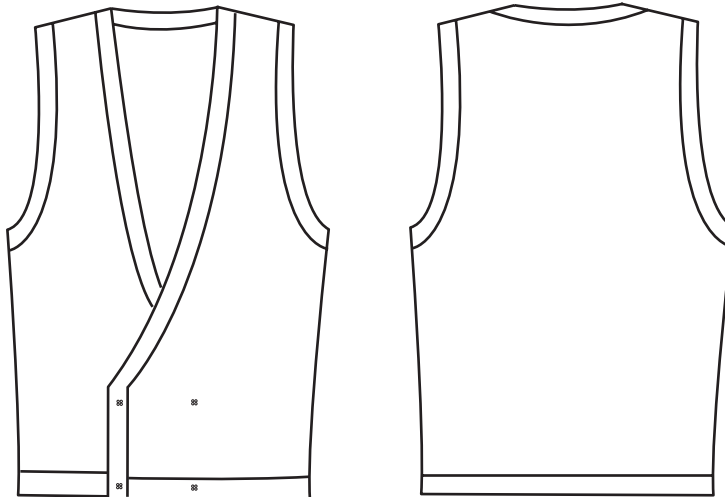
sizes: S, M, L

available colors:
grey, black

100% wool
lining 100% viscose

double-breasted

Waistcoat Knit
Nr. WC03-11



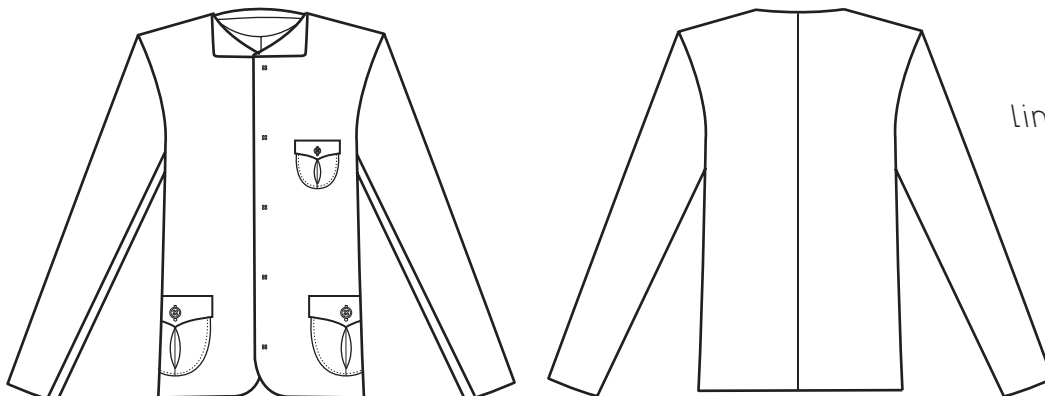
sizes: S, M, L

color: grey (multi)

100% wool
wood buttons

double-breasted

Blazer Button-Down
Nr. B01-11



sizes: S, M, L

color: grey

100% wool
lining 100% viscose
horn buttons

no collar
straight fit

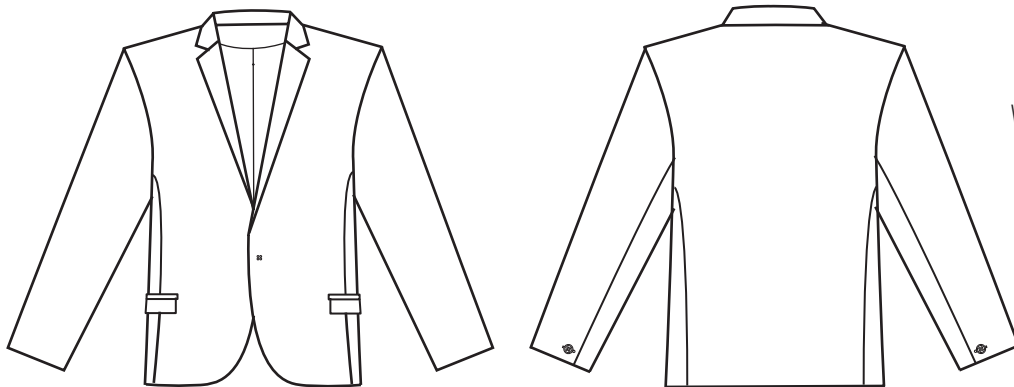
Blazer Short
Nr. B02-11

sizes: S, M, L

color: black

100% wool
lining 100% cotton
horn buttons

slim fit



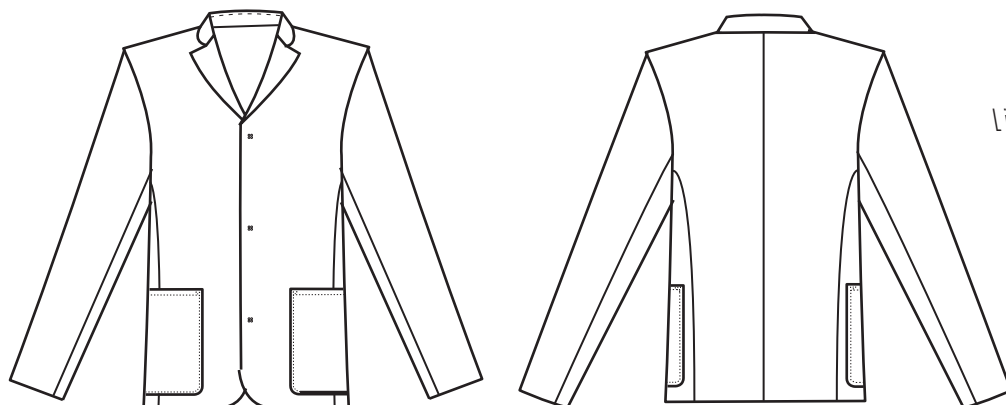
Blazer Contrast
Nr. B03-11

sizes: S, M, L

color: grey

100% wool
lining 100% viscose
horn buttons

straight fit

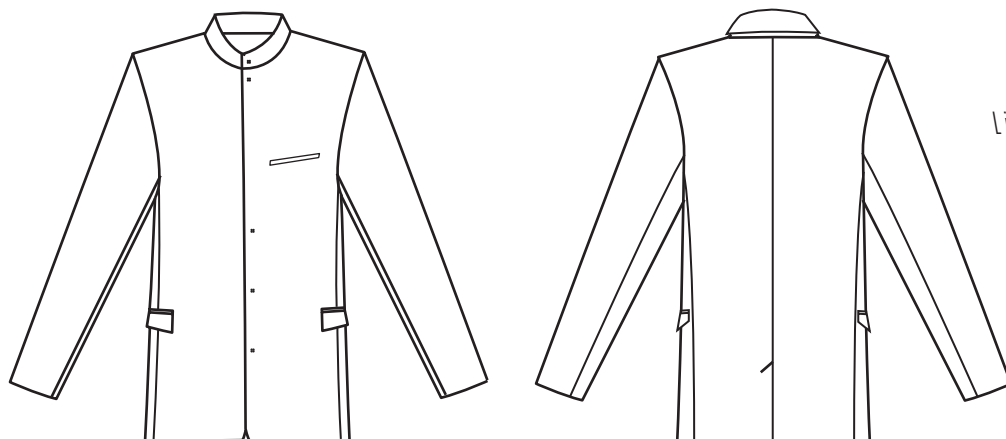


Blazer Long
Nr. B04-11

sizes: S, M, L

color: blue

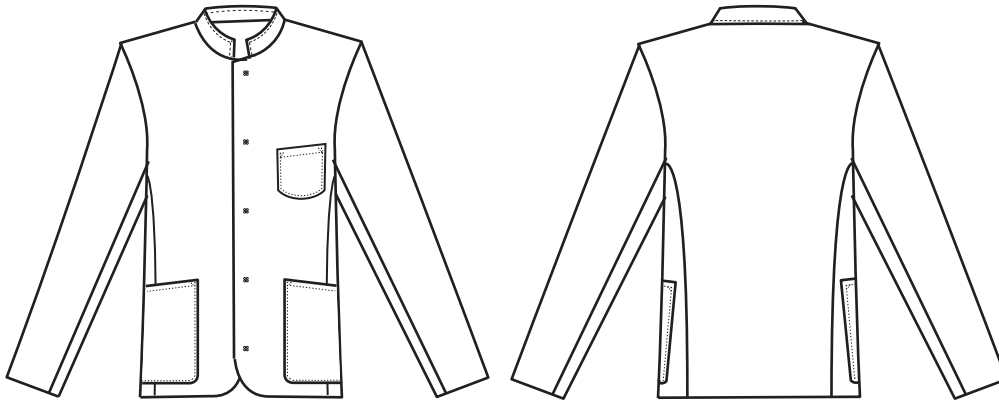
100% wool
lining 100% viscose
horn buttons
leather details



Blazer Stand-Up
Nr. B05-11

sizes: S, M, L

color: black

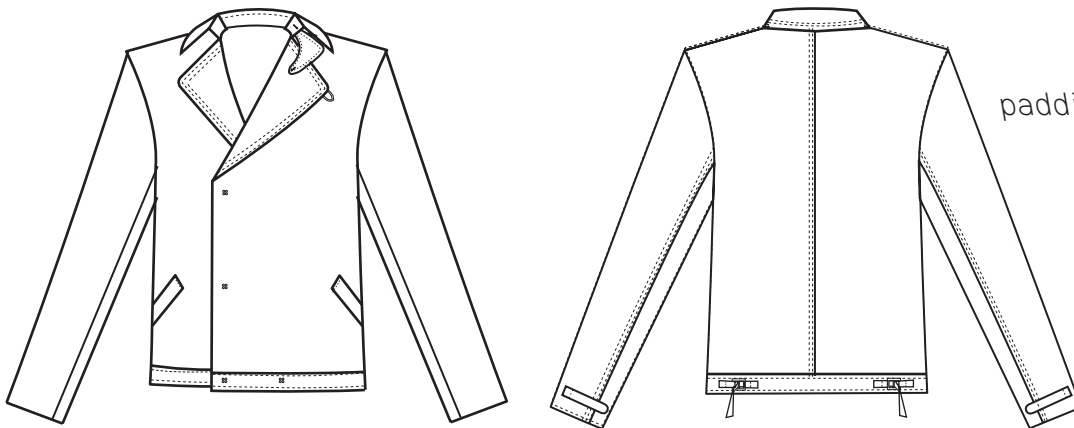


60% wool
40% acrylic
lining 100% viscose
horn buttons

Jacket Double
Nr. J01-11

sizes: S, M, L, XL

color: camel

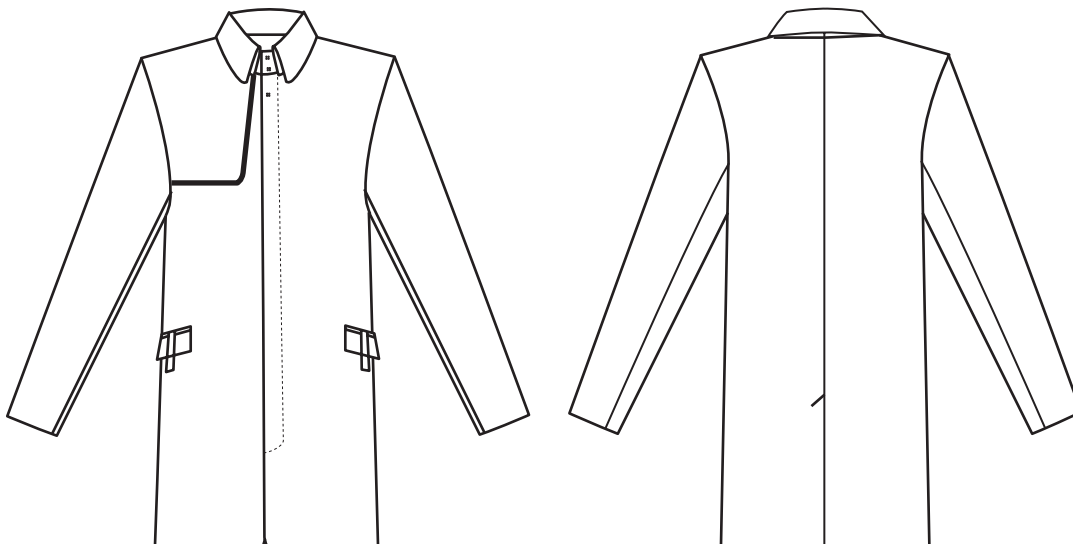


100% cotton
lining 100% cotton
padding 100% polyester
horn buttons

Coat Fitted
Nr. C01-11

sizes: S, M, L

color: charcoal



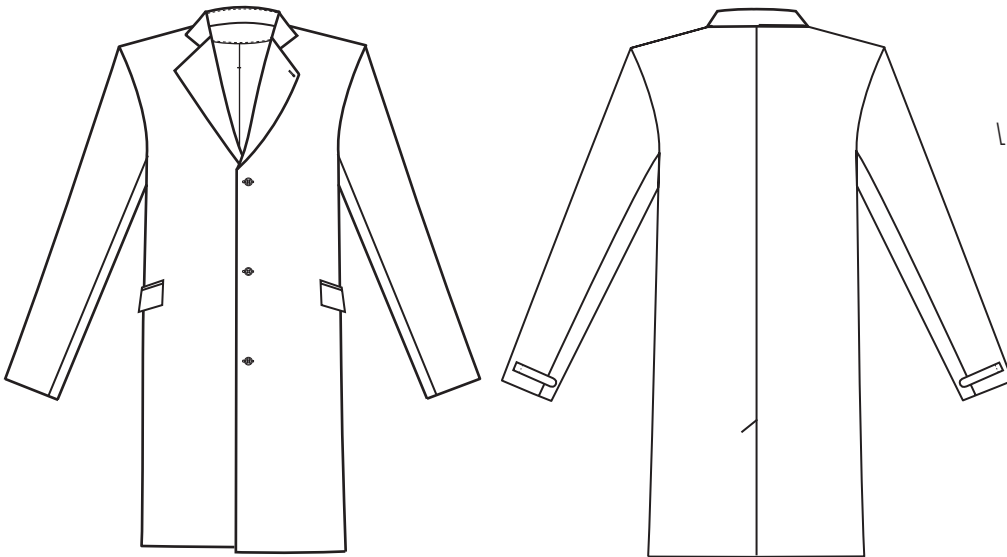
100% wool
lining 100% viscose
wood button
leather detail
concealed button panel

Coat Over
Nr. C02-11

sizes: S, M, L

color: brown

100% wool
lining 100% viscose
leather buttons
leather details



Tie
Nr. T01-11

onesize

various colors

100% wool



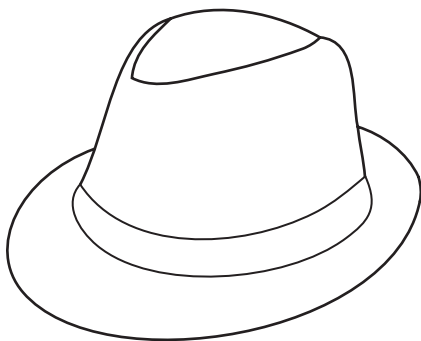
Hat Wire
Nr. H01-11

sizes: 56, 57, 58, 60

color: black, blue

100% wool

adjustable wire brim

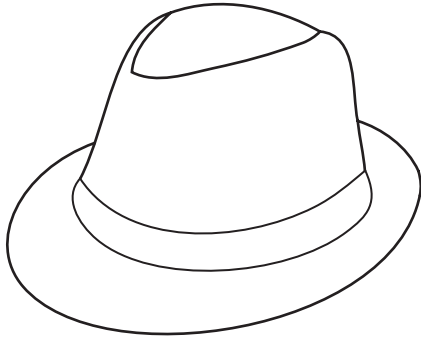


Hat Drilbee
Nr. H02-11

sizes: 56, 57, 58, 60

color: black

100% wool

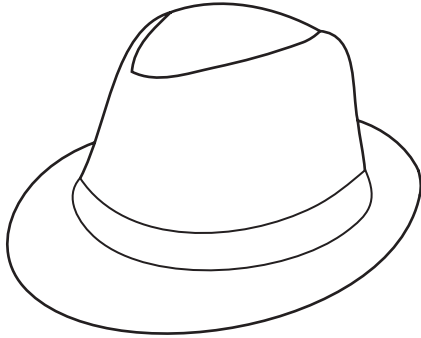


Hat Simple
Nr. H03-11

sizes: 56, 57, 58, 60

color: brown

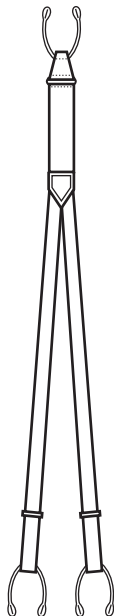
100% rabbit fur



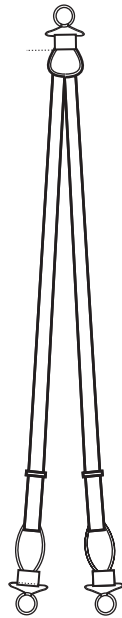
Suspenders Old
Nr. SP01-11

onesize

color: beige
brown leather details
metal details

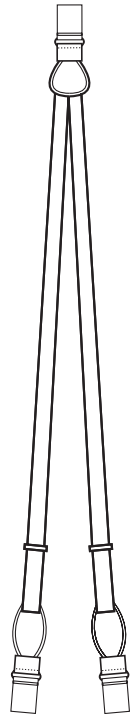


Suspenders Clip
Nr. SP02-11



onesize
color: beige w/ blue stripes
brown leather details
round metal clasps
rope details

Suspenders Clip
Nr. SP03-11



onesize
color: beige w/ blue stripes
brown leather details
square metal clasps
rope details

Bag Citybag
Nr. B01-11



size: ca. 33 x 33 x 15 cm

color: beige/brown

100% eco-linen
lining 100% eco-linen
leather details

brass-colored metal details

Bag Weekender
Nr. B02-11



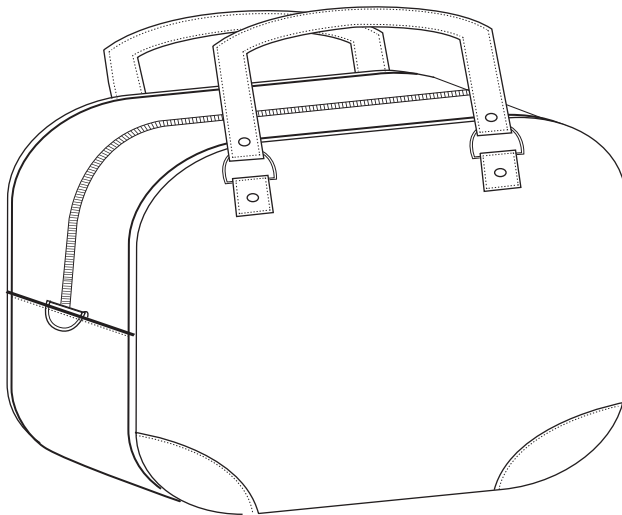
size: ca. 43 x 28 x 19 cm

color: beige/brown

100% eco-linen
lining 100% eco-linen
leather details

brass-colored metal details

Bag Traveller
Nr. B03-11



size: ca. 50 x 33 x 22 cm

color: beige/brown

100% eco-linen
lining 100% eco-linen
leather details

brass-colored metal details

Please send us an email for our pricelist and
ordersheet.

sales@jensfanslau.com

C O N T A C T

Maßatelier JENS FANSLAU
Skalitzer Str. 32/33
10999 Kreuzberg
Europe

TEL + 49 178 198 31 43

contact@jensfanslau.com
www.jensfanslau.com

